

Thermopa 25 automatique

automatic reset

RoHs

Reach

UL 96738

NF-F16-102



1/2 pouce, automatique
Leurs tolérances peuvent être réduites sur demande.
Un contrôle unitaire est effectué en fin de production.
Pour avoir un thermostat pré-câblé, consultez-nous
ou rendez-vous sur notre rubrique «Spécifiques».

1/2 inch Disc, automatic
Tolerances can be reduced upon request.
100% Final test on temperature.
Specific cabled parts can be developed upon request.

■ 10A 250 VAC

■ Durée de vie : 100 000 cycles
Life time

■ Corps Fortron
Body

■ Résistance de contact Contact resistance :
argent silver : $\leq 50 \text{ m } \Omega$
or gold plated : $\leq 10 \text{ m } \Omega$

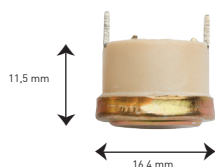
■ Résistance d'isolement : 10 G Ω
Insulation resistance

■ Tension de tenue : 1800 Veff / 1 sc
Dielectric strength

■ Résistance maximale à la chaleur : 180°C
Max admissible temperature

Schéma à échelle 1/1

On a scale of 1 to 1



Modèle 25

Cosses à souder
Soldering terminals

COMPOSITION DE LA RÉFÉRENCE :

PARTNUMBER DESCRIPTION :

TH **A** **B** **C** **D** **E** **F**

A MODÈLE

TYPE

25 -10 A 250 VAC Automatique Automatic

B CONTACT en montée de température CONTACT by increasing temperature

2 Argent Ouvrant Silver opening 0 Argent Fermant Silver closing

4 Or Ouvrant Gold plated opening 5 Or Fermant Gold plated closing

C FIXATION voir schémas MOUNTING

00 Sans Fixation Without bracket 85 M4x6 Ronde Round stud mounting

92 Bride Mobile 30mm Moveable Bracket 86 M4x6 Hexagonale Hexagonal stud mounting

97 Bride Mobile 35mm Moveable Bracket 87 M5x6 Ronde Round stud mounting

98 Bride Mobile 23,8mm Moveable Bracket 88 M5x6 Hexagonale Hexagonal stud mounting

94 Bride Fixe 23,8 x 19 mm Fixed Bracket 77 M22x16 M22 stud mounting

96 Bride Fixe 23,8 x 20,6 mm Fixed Bracket 78 M22x8,5

... Autre montage étanche, enrobé, filaire... nous consulter
Other mounting, cables,... please consult us

D RACCORDEMENTS voir schémas TERMINALS

01 Faston 6,35 horizontal 11 Faston 4,78 horizontal

02 Faston 6,35 vertical 12 Faston 4,78 vertical

04 Faston 6,35 45° 14 Faston 4,78 45°

21 Cosses à souder horizontales Horizontal soldering terminals 41 Sortie fil Cable

22 Cosses à souder verticales Vertical soldering terminals

23 Cosses à souder dos à dos Back to back soldering terminals

24 Cosses à souder 45° 45° Soldering terminals

E T°C de fonctionnement TOL +/- 3°C OPERATING TEMPERATURE

De 15 à 130°C From 15 to 130°C

F T°C de retournement TOL +/- 5°C RETURNING TEMPERATURE

Hystérésis Standard : 15°C ; Mini 10°C

Standard differential

999 : Température de retournement non contrôlée

Return temperature not controlled

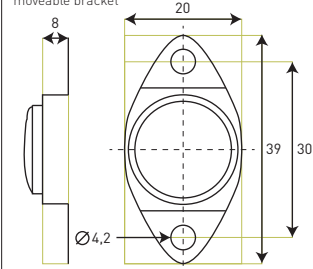
FIXATIONS ET RACCORDEMENTS

Mounting and Terminals

Pour modèles
THERMOPA 15-17-25

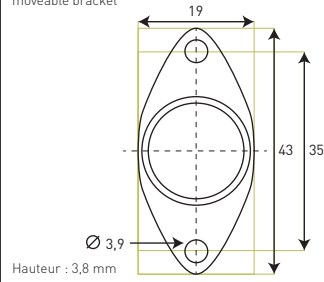
Fixation Mounting 92

Par bride mobile
moveable bracket



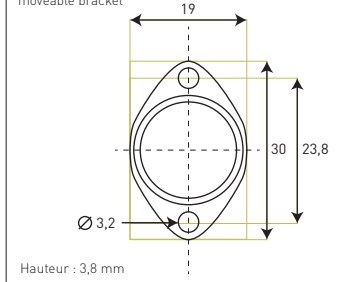
Fixation Mounting 97

Par bride mobile
moveable bracket



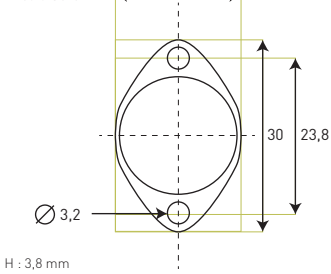
Fixation Mounting 98

Par bride mobile
moveable bracket



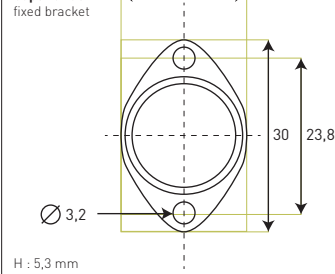
Fixation Mounting 94

Par bride fixe
fixed bracket



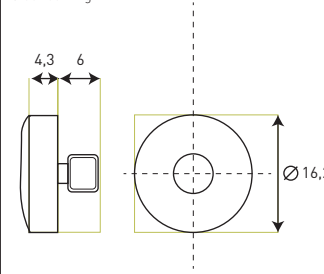
Fixation Mounting 96

Par bride fixe
Capot bride
fixed bracket



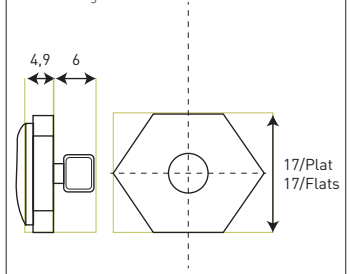
Fixation Mounting 87 (M5) 85 (M4)

Par tige filetée
stud routing



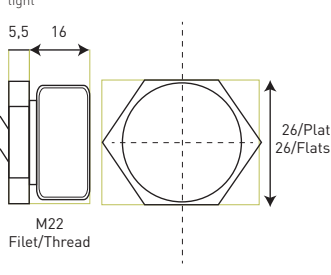
Fixation Mounting 88 (M5) 86 (M4)

Par tige filetée
stud routing



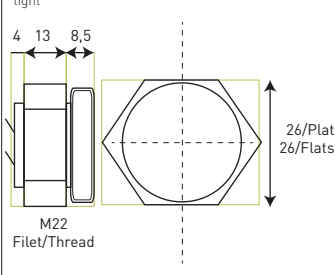
Fixation Mounting 77

Etanche
tight



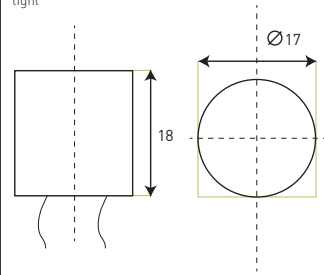
Fixation Mounting 78

Etanche
tight



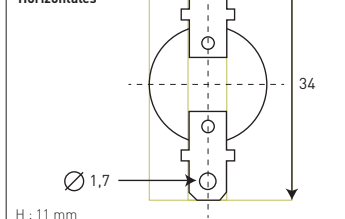
Fixation Mounting 68

Etanche
tight



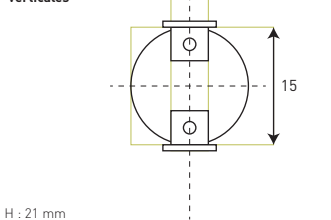
Raccordement Terminal 01

Modèle 25
Cosses Faston
Faston terminal
Horizontales



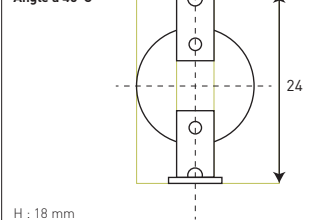
Raccordement Terminal 02

Modèle 25
Cosses Faston
Faston terminal
Verticales



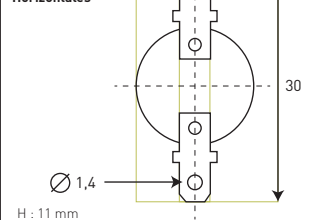
Raccordement Terminal 04

Modèle 25
Cosses Faston
Faston terminal
Angle à 45°C



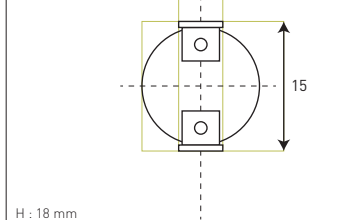
Raccordement Terminal 11

Modèle 25
Cosses Faston
Faston terminal
Horizontales



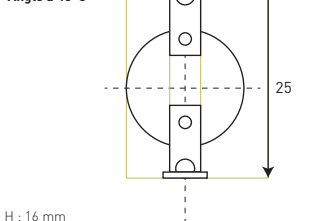
Raccordement Terminal 12

Modèle 25
Cosses Faston
Faston terminal
Verticales



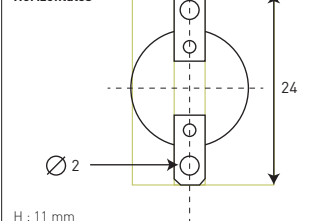
Raccordement Terminal 14

Modèle 25
Cosses Faston
Faston terminal
Angle à 45°C



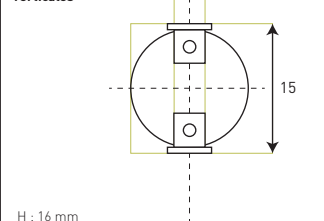
Raccordement Terminal 21

Modèle 25
Cosses à souder
Terminal for soldering
Horizontales



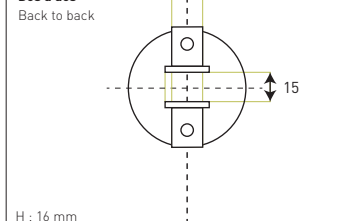
Raccordement Terminal 22 (1)

Modèle 25
Cosses à souder
Terminal for soldering
Verticales



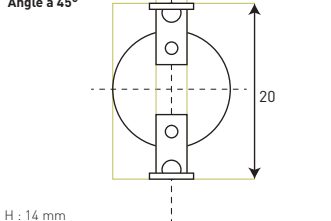
Raccordement Terminal 23

Modèle 25
Cosses à souder
Terminal for soldering
Dos à dos
Back to back



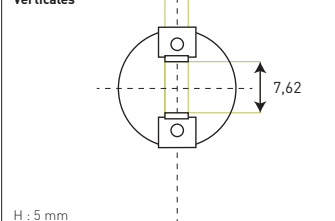
Raccordement Terminal 24

Modèle 25
Cosses à souder
Terminal for soldering
Angle à 45°



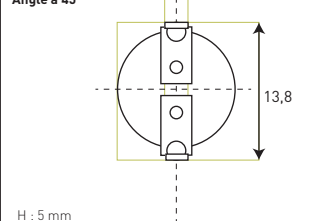
Raccordement Terminal 22 (1)

Modèle 15-17
Cosses à souder
Terminal for soldering
Verticales



Raccordement Terminal 24 (1)

Modèle 15-17
Cosses à souder
Terminal for soldering
Angle à 45°



Raccordement Terminal 42

Modèle 15-17
Pour C.I.

